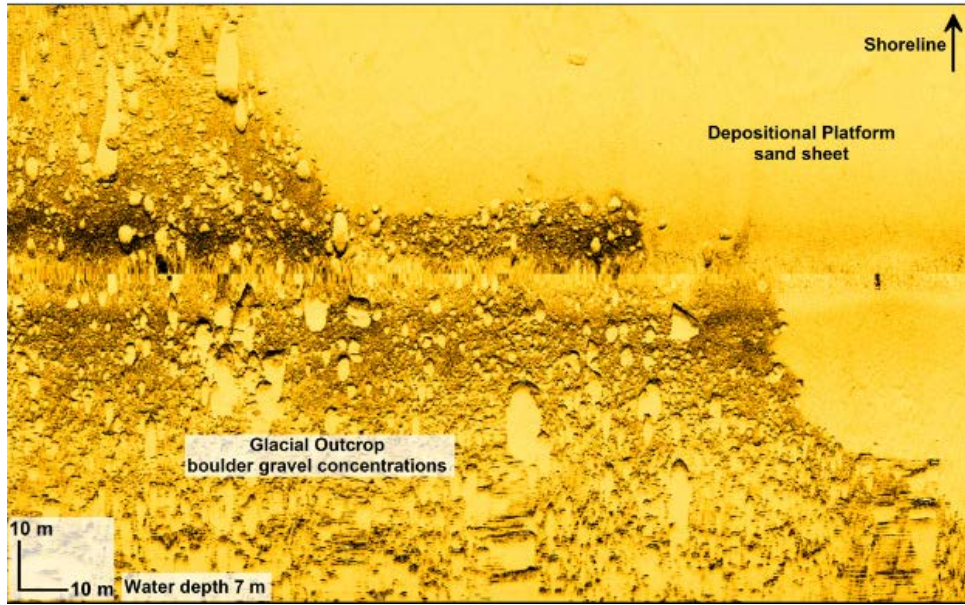


## Misquamicut, Rhode Island

This data was acquired on the shoreface offshore Misquamicut, Rhode Island, while mapping the shoreface as part of a project to locate placement sites for beneficial reuse of dredged material.

Please notice the crisp boundary between the depositional platform sand sheet and boulder-gravel pavement.

This is from a shoreface depositional environment. Note the abundance of boulders. In many instances, the shoreface is not the flat sandy feature as many would have you believe.



The data was collected using an EdgeTech 272TD and funded by the New England District of the USACE.

Submitted by:  
Bryan A. Oakley and Jon C. Boothroyd  
Dept. of Geosciences  
College of the Environment and Life Sciences  
University of Rhode Island