

Sonar Shipwreck Search System Trial San Francisco Bay, California

A deep search system comprised of a SeaSpy Magnetometer interfaced to a Klein System 3000 was trialed in San Francisco Bay.

SonarWiz 5 was used both for acquisition and processing of both data sets. The advantage of co-registered processed mag and SSS data is clearly seen in the following examples. Water depth was approximately 120 feet with 2 small wrecks side by side.

Side scan sonar range scale was 75 meters per side and the magnetometer cycle rate was 0.5 Hz.

Submitted by:
Garry Kozak
GK Consulting
Undersea Search and Survey Specialist
www.2kozak.com



Image 1: SeaSpy Magnetometer and Klein 3000 Towfish Ready for deployment

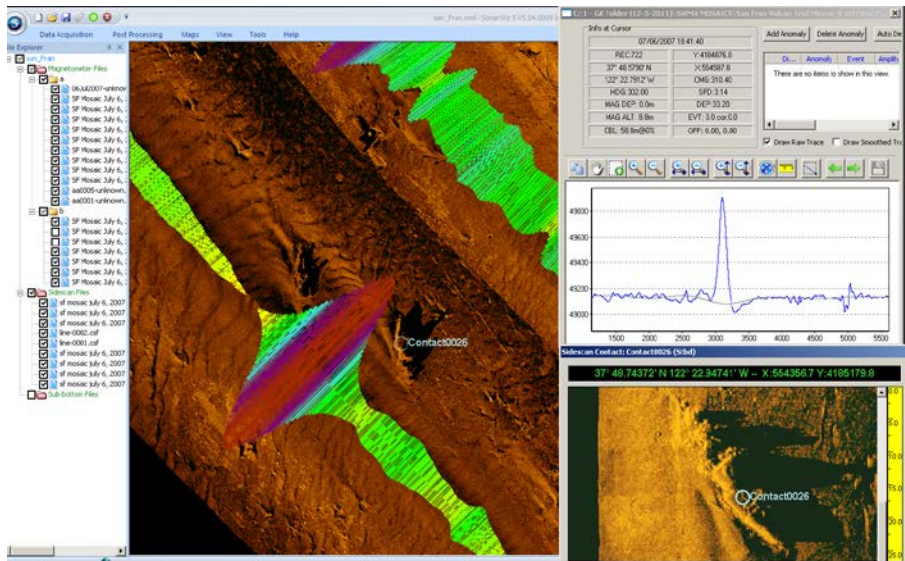


Image 2: Acquisition mode showing mag data layered on real-time sonar mosaic. Shipwreck is shown in the contact window.



Image 3: SeaSpy Magnetometer Data processed in SonarWiz 5 into a contour map and draped onto the Side Scan Sonar Mosaic.